

DOCK BOSS Swivel Rail

Model DB-S

Parts and Instruction Manual

Important: DO NOT mount the Dock Boss to rotted or loose decking. Inspect the dock and repair as necessary prior to installing the Dock Boss.

Warning: Know your dock! The floatable components of certain floating docks can be damage by drilling into them. Use caution when drilling into the dock and be sure to choose the correct length of mounting hardware.

Installation Instructions

Important: The wood or composite decking should be a minimum of 1" thick

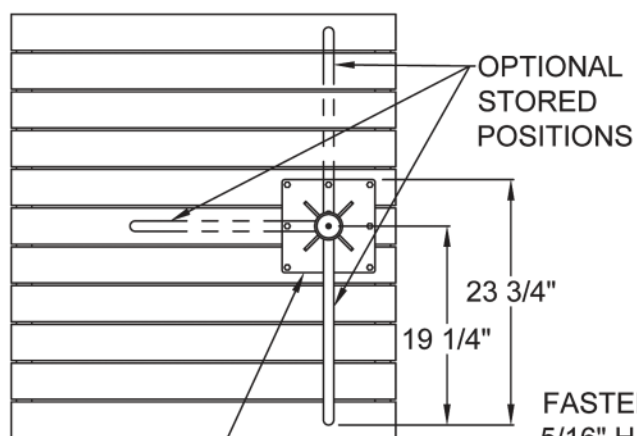
1. See Figures 1, 2, 3 & 4 for overall sizes and placement of the Dock Boss
2. Confirm that the Handrail Assembly is in the stored position (See Figure 2A)
3. Secure the Dock Boss to the deck by using 5/16" lag bolt hardware with a minimum length of 1-1/2" (not included) (See Figure 1)

Care and Maintenance

- Clean using mild soap and water
- Polish the Dock Boss using automotive polish

Operating the Dock Boss

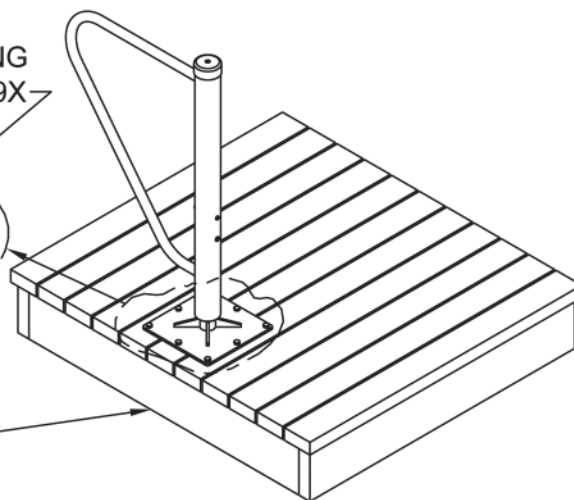
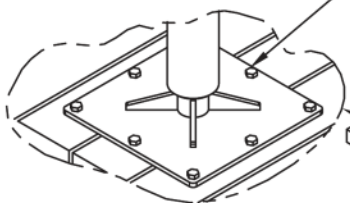
- To use the Dock Boss: Lift the Handrail Assembly and rotate until handrail extends over the boat. Lower the Handrail Assembly into this new position. To meet your needs, the Dock Boss can rotate 360-degrees clockwise and counter-clockwise, with four positions to choose from (See Figure 3)
- To store the Dock Boss: Lift the Handrail Assembly and rotate into one of three positions where the handrail is not extending over the boat (Figure 2A)



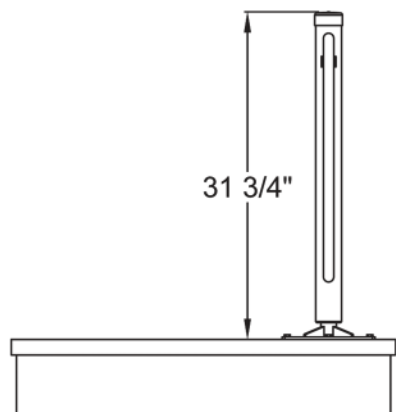
9" X 9"
BASE PLATE

STORED POSITION
TOP VIEW
FIGURE 2A

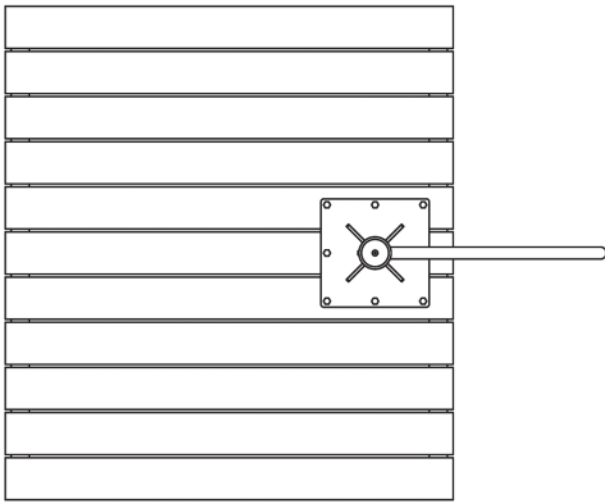
FASTEN TO DECK USING
5/16" HARDWARE TYP 9X



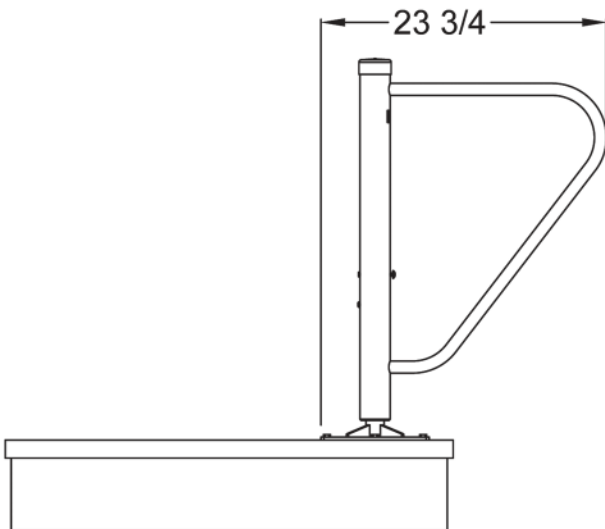
STORED POSITION
3D VIEW
FIGURE 1



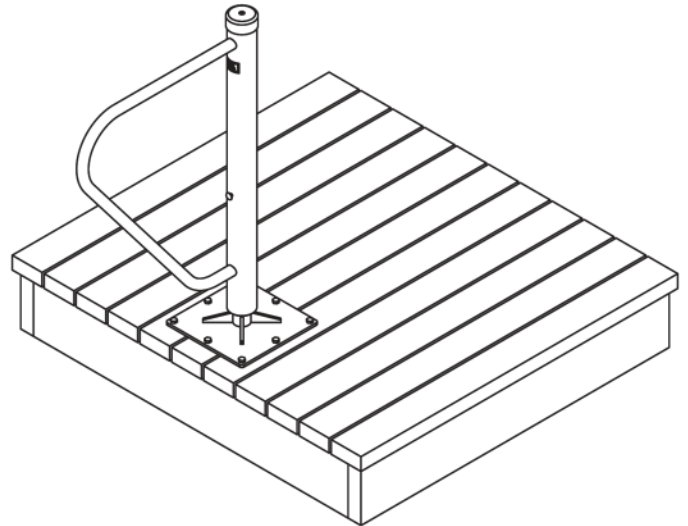
STORED POSITION
SIDE VIEW
FIGURE 2



DEPLOYED POSITION
TOP VIEW



DEPLOYED POSITION
SIDE VIEW
FIGURE 3



DEPLOYED POSITION
3D VIEW

ITEM	PART NUMBER	DESCRIPTION	QTY
1	8700-010-120	BASE ASSY, SWIVEL	1
2	8700-010-130	POST HANDRAIL ASSY, SWIVEL	1
3	8700-010-107	COLLAR	1
4	9310-222508	SCREW, 1/4-20 X 1/2 BRASS PAN HEAD PHH	6
5	8700-010-109	SPACER, .257 ID X 3/8 OD X 9/64	6
6	9140-101214	SPRING PIN, Ø1/8 X 7/8	2
7	9180-002544	CLEVIS PIN, Ø1/4 X 2-3/4, 18-8SS	1
8	9114-292500	CAPS, PUSH NUT SS	1
9	9114-282500	WASHER, 1/4 LOCK, INTERNAL TOOTH, SS	1
10	9110-502508	SCREW, 1/4-20 X 1/2 BUTTON HEAD SS	1
11	8700-005-107	CAP, Ø2 1/2 X 1 HIGH	1
12		LABEL, PATENT PENDING	1

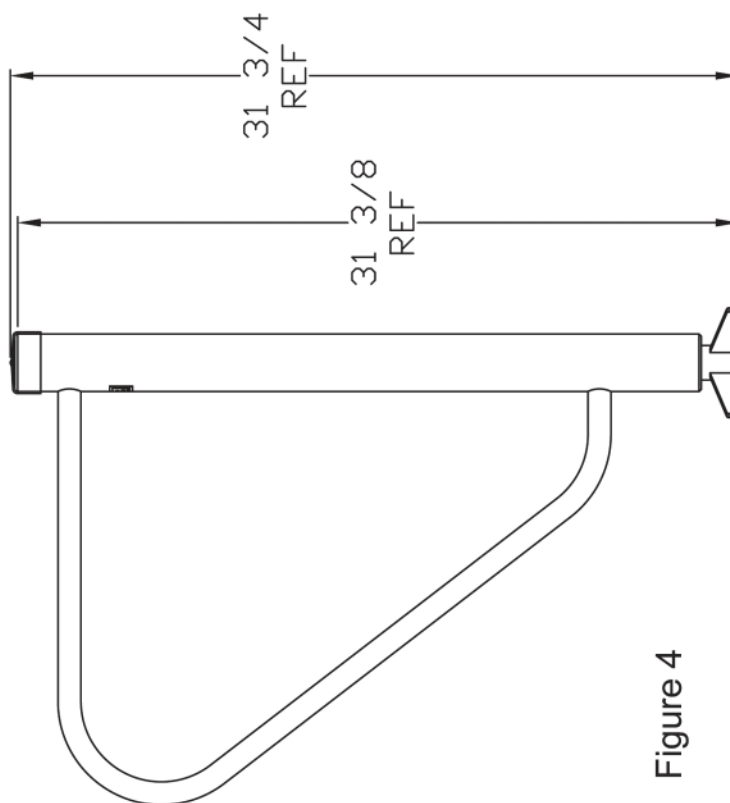
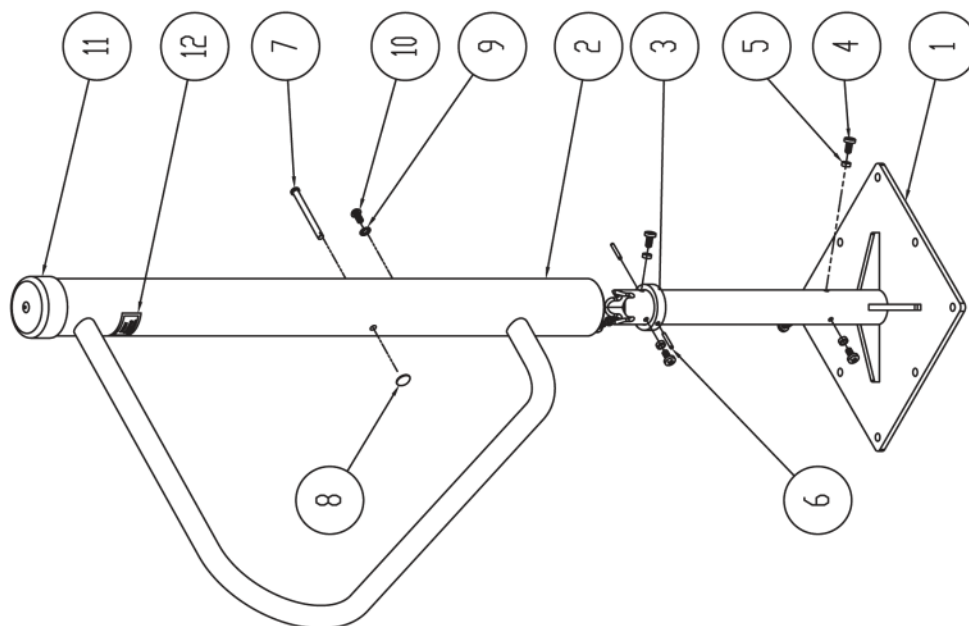


Figure 4



**Barnegat
Light® marine products**

10 West College Avenue, P.O. Box 337, Yardley, PA 19067-0587 • (215) 493-2777 • FAX: (215) 493-1401

Barnegat Light is the registered trademark for Barnegat Light Marine Products

www.barnegatlt.com

Copyright Barnegat Light 5-17